



YORK REGION: YOUR IMPACT IN 2020

LAST YEAR'S UNIVERSAL LOGISTICS DONATION: \$44,060

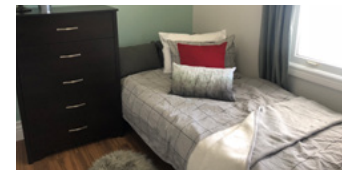
360°KIDS: THE TRANSITIONS PROGRAM

Funds from the HHTH York Region event supports 360° kids, which serves homeless and at-risk youth aged 16-26 in the York Region area. They offer youth a variety of supports including: basic needs such as food or clothing, offering emergency shelter, housing, outreach programs, and more.

Donations from the program go towards 360° kids' Transitions Program, which provides youth with long-term, affordable and furnished rental apartments through subsidized rent. Through this program, youth are able to continue to go to school, work, and lead healthy and productive lives without worrying about where they are going to sleep at night. Beyond just helping cover the costs of subsidized rent, HHTH funds also assist with operating costs such as the program's Case Manager. When youth participate in the Transitions Program, they are supported by a Case Manager who works one-on-one with them to help maintain their housing, establish goals, develop life skills, connect them with additional resources and ultimately help them accomplish success.



THROUGH THE GENEROUS SUPPORT OF HOCKEY HELPS THE HOMELESS, 360°KIDS HAS BEEN ABLE TO PROVIDE 14 YOUTH WITH TRANSITIONAL HOUSING AND SUPPORTS OVER THE PAST YEAR IN 8 APARTMENTS. AS A RESULT OF THE ONGOING SUPPORT OF THIS PROGRAM, 3 YOUTH HAVE SUCCESSFULLY TRANSITIONED TO INDEPENDENCE, 4 ARE ATTENDING POST-SECONDARY EDUCATION, AND 6 ARE NOW EMPLOYED FULL-TIME.



BLUE DOOR: THE ABODE PROGRAM

Blue Door is addressing the root causes of homelessness to ultimately lift people out of poverty and into stable housing by focusing on: expanding housing options to improve housing stability and homelessness prevention, improving physical and mental health, and creating new employment opportunities.

Funds will go towards Blue Door's innovative program "Abode" which will provide life-changing support to families facing homelessness by creating five second stage independent low-rental houses. The program incorporates best practices from a Housing First approach by offering families up to one year of subsidized housing and support services. Throughout their time in Abode, a full-time Supportive Housing Case Manager empowers families with the supports needed to overcome barriers and find long-term housing stability.



GET INVOLVED TODAY. BE A GAME CHANGER.